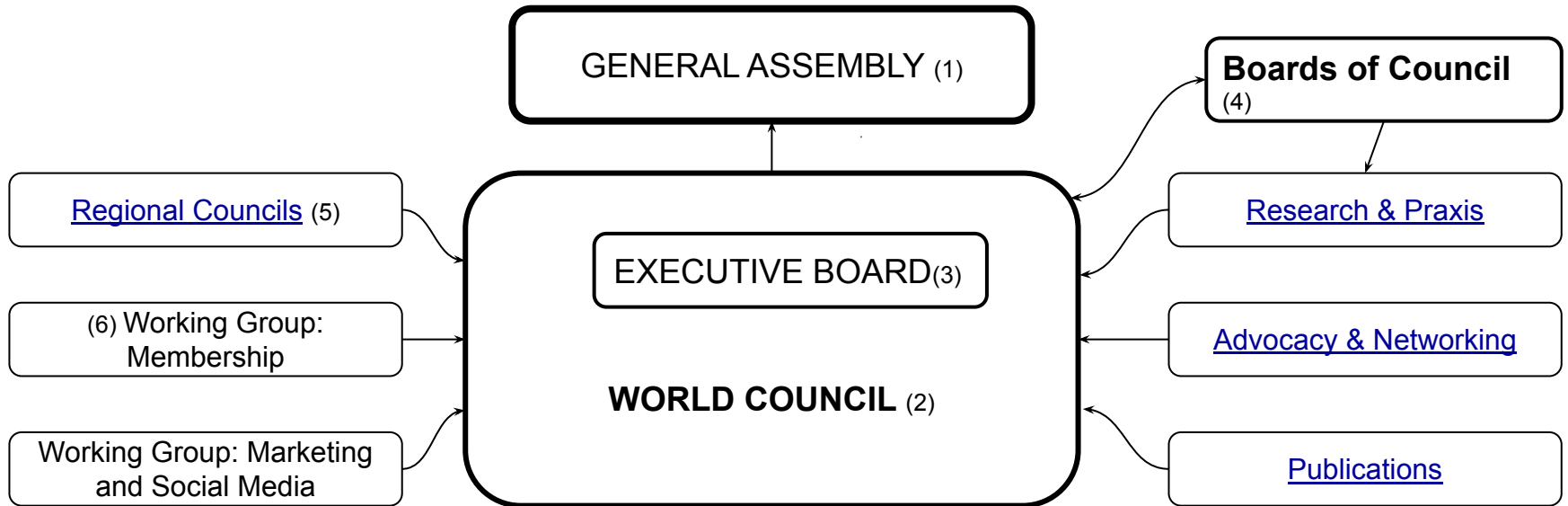




## InSEA Organisational Chart



### Summary Notes on Functions (please refer to the [Constitution](#) for more detail):

1. The general Assembly consists of all members of the Society and determines the main lines of policy. It normally meets at the World Congress every two years.
2. The World Council (WC) consists of the officers of the Executive Board, elected World Councillors, ex-officio and co-opted members and is responsible to the General Assembly for the work of the Society. WC normally meets twice or three times per year.
3. The Executive Board (EB) consists of the officers of the Society; President, Immediate Past President; two Vice Presidents, the Secretary and the Treasurer. The EB normally meets at least 5 times per year
4. There are three (2019-21) Boards of Council, each tasked with key aspects of the Society's work (click on the links for more detail)
5. Regional Councils may be formed and work to further the aims of the Society within the region. Of the six regions, there are two with Regional Councils; Asia and Europe.
6. Working Groups may be formed from time to time and may be tasked with advising the Society on key issues. These are small groups chaired by elected World Councillors.